



Commercial
Maritime Handling Systems



Defence
Naval Handling Systems



Electric Workshop

Welding / Machine Shops

Assembly Workshops

Hydraulic Workshop

Workshops

Test Facilities



Engineering Dept.

Assembly Workshops

SH Defence (Part of SH Group A/S)
Approx. 500 employees
Turnover in the last financial year: \$84,000,000

Everything is done in-house

Project management



Engineering department



Steel



Welding



Hydraulic and mechanical



ILS documentation



Electrical

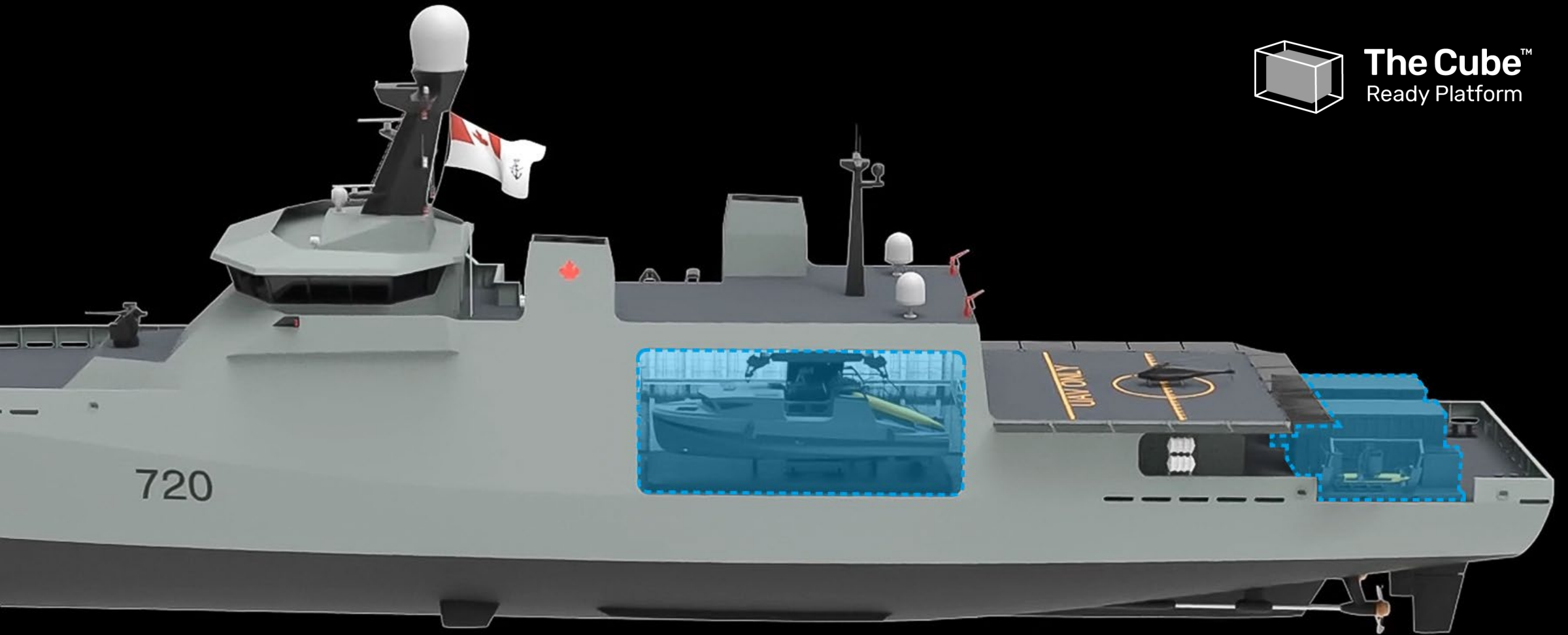


Automation

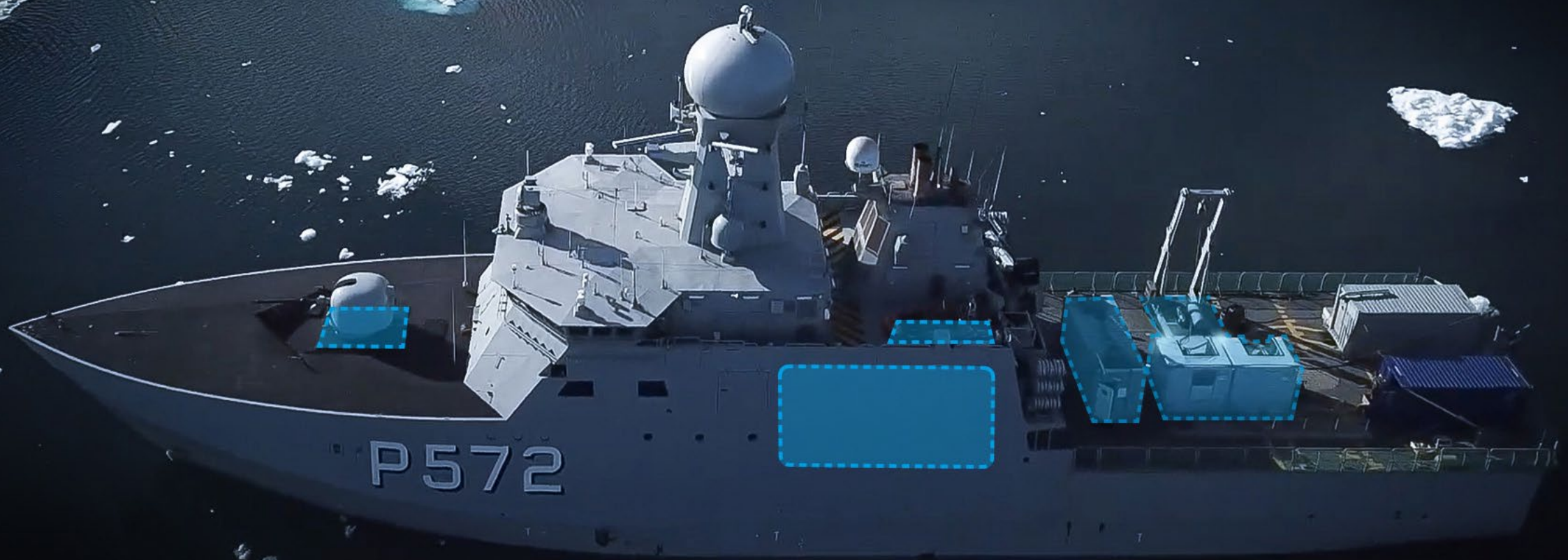


Testing



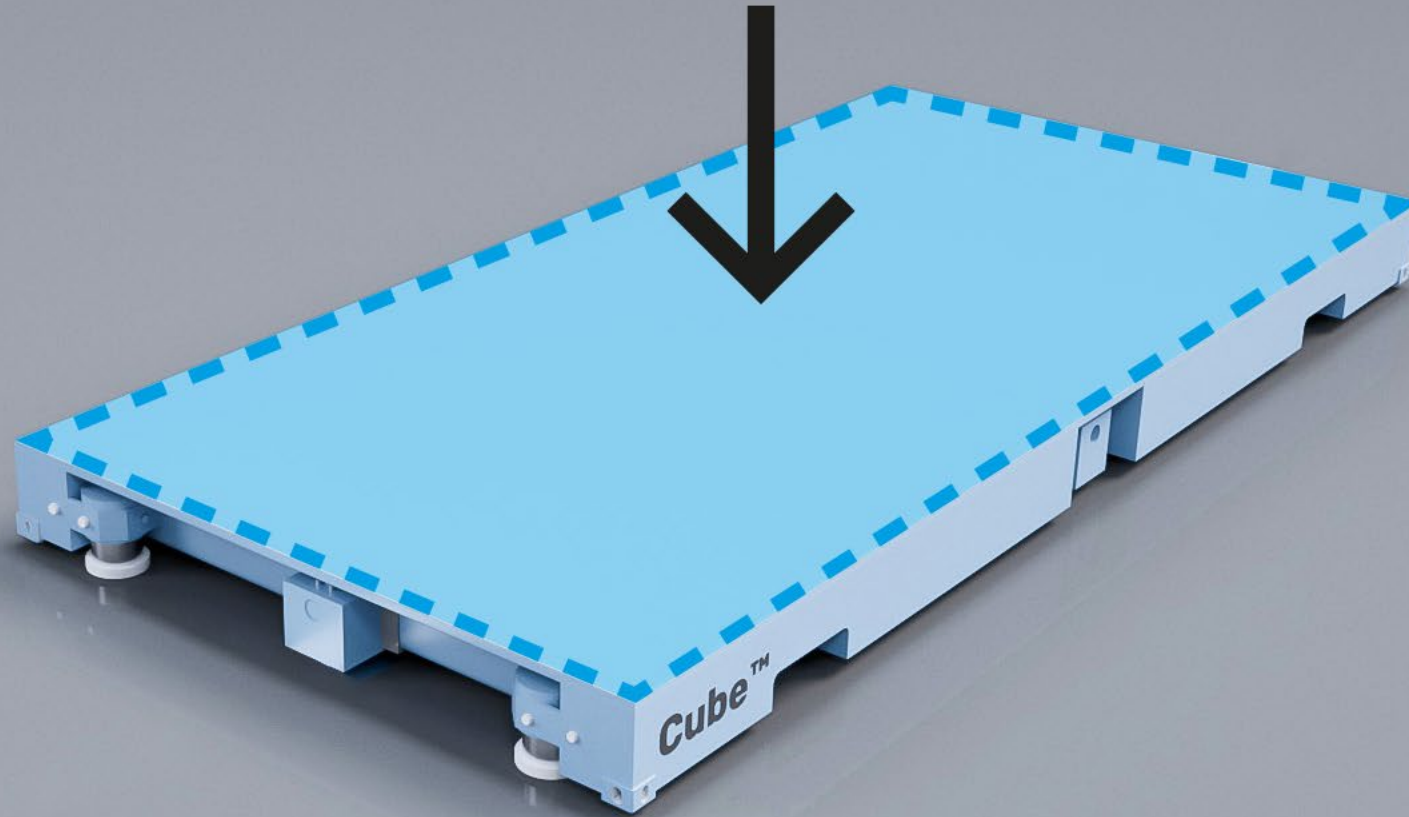


Plug-and-Play Interchangeable Mission Modules for
Air, Surface, and Subsea domains



Turn (almost) any Coast Guard, SAR or Navy platform into a multi-mission capability

Place (any) equipment (even yours)
on a Cube™ Frame





Anti Submarine Warfare module



Oil spill module



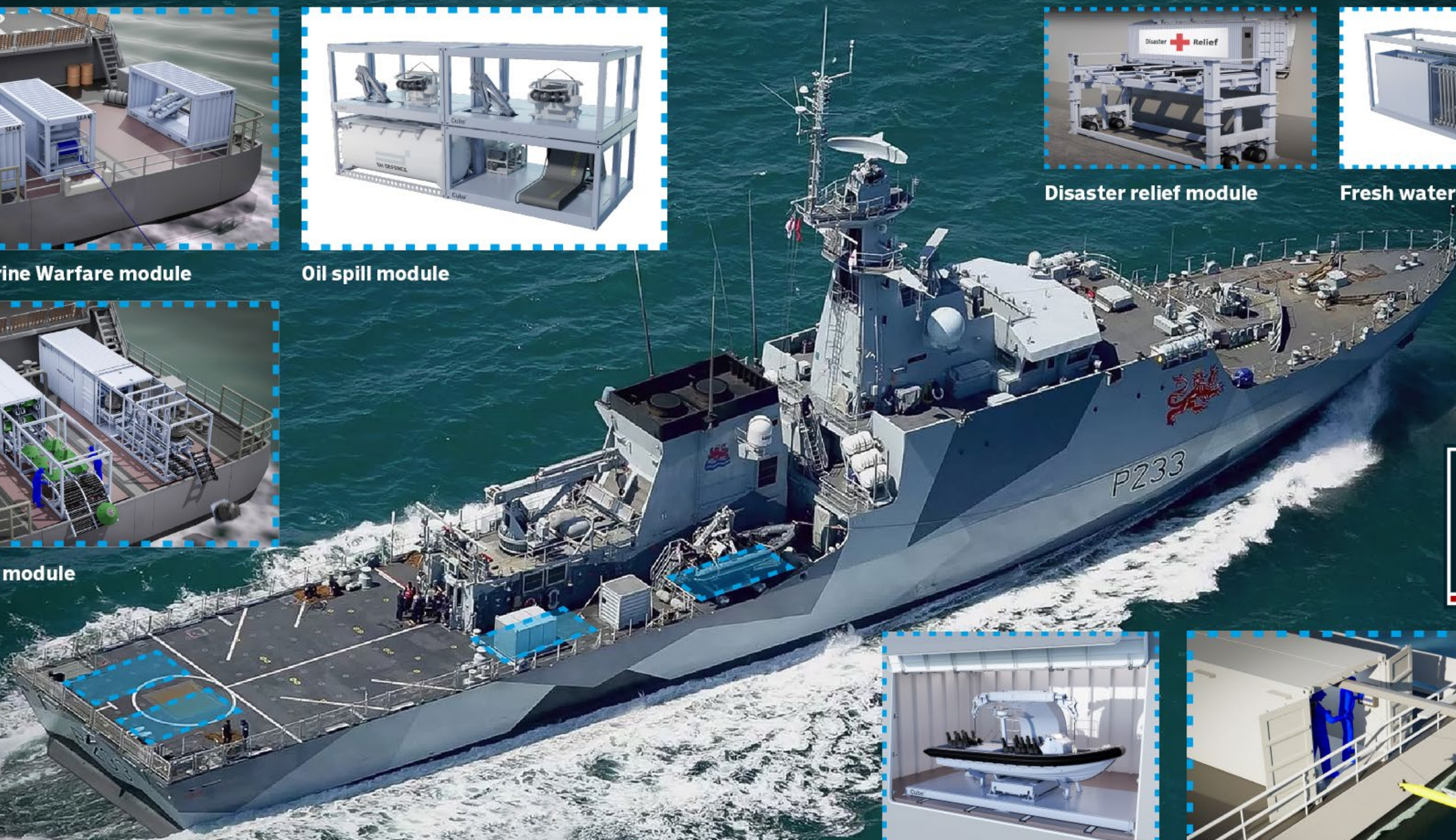
Disaster relief module



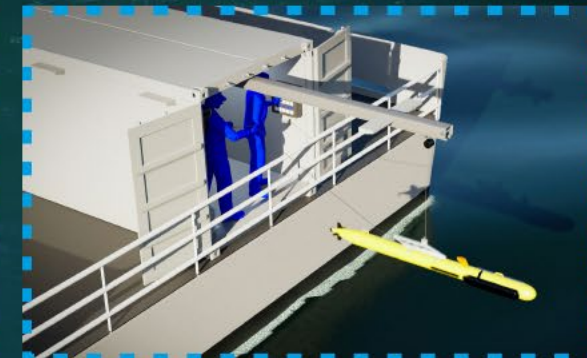
Fresh water module



Mine Laying module



Boat module



AUV module

Patent
pending

SH DEFENCE



Cube™

SH DEFENCE

Patent
pending

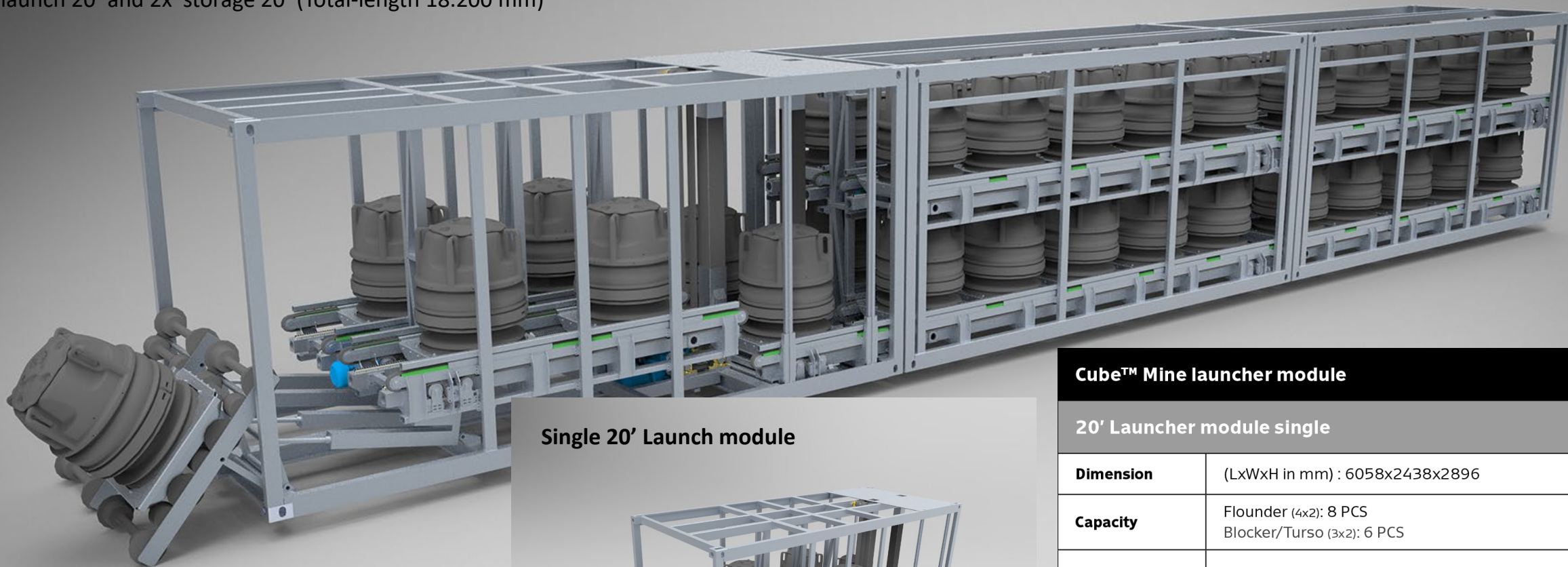
SH DEFENCE



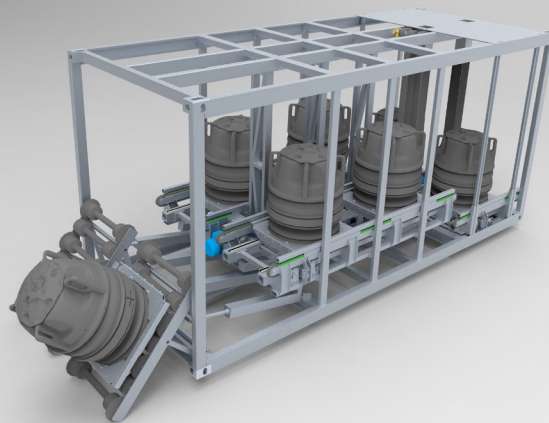
Cube™

Large setup: 3 x 20'

1x launch 20' and 2x storage 20' (Total-length 18.200 mm)



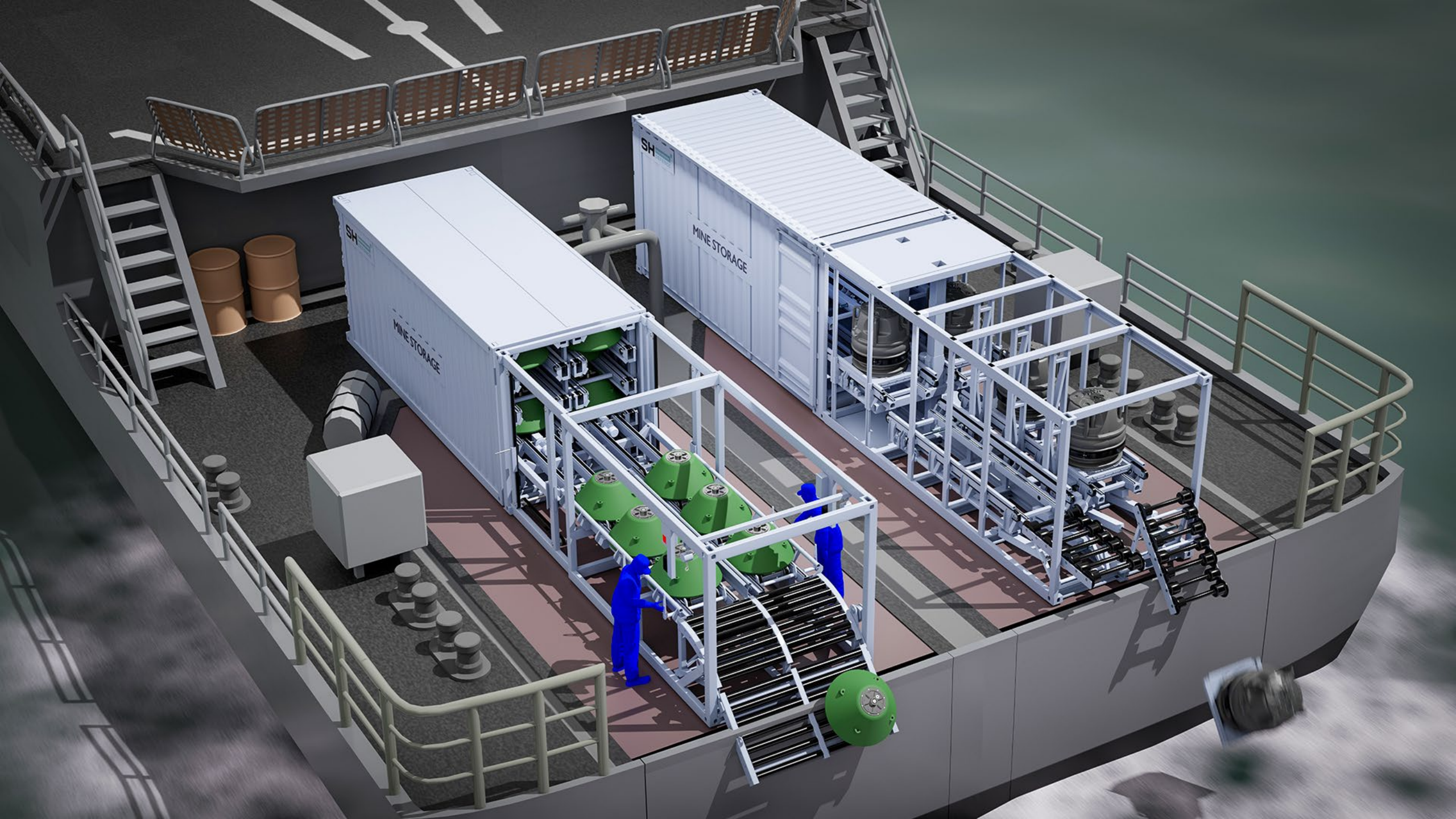
Single 20' Launch module

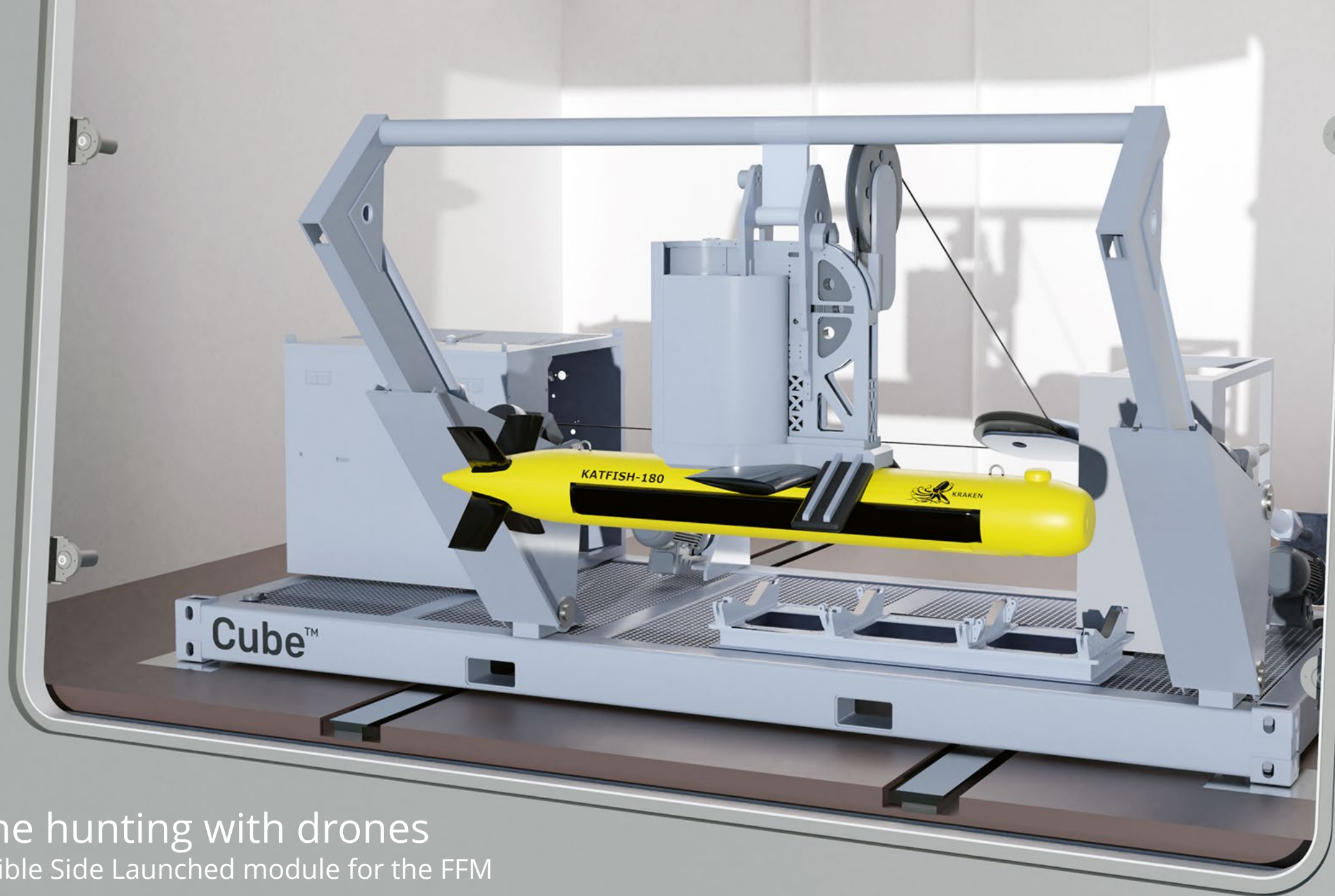


Cube™ Mine launcher module

20' Launcher module single

Dimension	(LxWxH in mm) : 6058x2438x2896
Capacity	Flounder (4x2): 8 PCS Blocker/Turso (3x2): 6 PCS
Weight	8.500 kg (own weight) Flounder weight - 10.100 kg (total) Blocker/Turso weight - 13.100kg (total)
Power	Flounder: Max. consumption: 4,6kW - (2x0,55 kW) Blocker/Turso: Max. consumption: 5,7kW - (2x1,1 kW)
Launch speed	30sec/mine
Power supply	400 Volt





Mine hunting with drones
Possible Side Launched module for the FFM



Mine hunting with drones
Possible Stern launched module for the FFM



Remote Mine Disposal System
Royal Canadian Navy